

DESCRIPTION

The SE-6600 is an industrial rated serial data encryption device featuring two serial ports; a device port and a network port. The SE-6600 uses AES 256-bit encryption, 128-bit block size. AES is the US Government standard.

The SE-6600 provides a secure link between host and remote user sites. The two RS232 serial ports operate at asynchronous speeds as low as 1200 bps and as high as 57.6 Kbps. The SE-6600 serial interface can be RS232, RS422, or RS485 2-wire or 4-wire.

FEATURES

- AES 256 bit encryption
- Industrial rated temperature from -40 to +75 C
- Two asynchronous serial ports
- RS232, RS422, or RS485 2-wire or 4-wire
- Ports speeds to 57.6 Kbps
- Point-to-point and point to multipoint
- Ideal for polling half duplex data
- Easy to setup and maintain
- Configuration via serial or ethernet port
- Use with modems, DSUs, radios
- Compact size; stand-alone or rack mounting
- AC and DC power supply
- User name and password option for configuration authority
- Bypass mode for initial remote installations
- ROHS, CE

The SE-6600 may be used point-to-point, linking two separate remote sites with radios, leased lines or dial connections, one port used for the connection, the other port for the user equipment. The SE-6600 can also be used on point-to-multipoint links. The SE-6600 is especially attractive for use over multipoint radios where high security is desired.

The SE-6600 has a bypass mode (Block Clear Mode) that can be used at initial installation. When installing in a large multidrop network, it is desirable to have the remote units not encrypt data until the host unit is installed. This makes the scheduling of installation less critical, as the initial remote installation will not disable the drop if a host unit is not yet in service. The remote unit is temporarily just a bump in the serial cable. Remote units begin to cipher after receiving a command from the host end unit to switch to "Block Cipher Mode".

The SE-6600 is straight-forward, easy to configure and maintain. Units can be configured via a serial port, or using the Ethernet port, via telnet or a web browser. The SE-6600 is feature rich but simple to set up and operate.

**Need a Special Option?
Custom Defaults?
Unusual or Unique Application?**

Call DCB... 1-800-432-2638

SE-6600 Serial Data Encrypter

SPECIFICATIONS

General

Two asynchronous RS232, RS422, or RS485 (2 or 4-wire serial ports):

- DE-9P (PC-9 pin) connectors, DTE interface
- Speeds to 57.6 Kbps, full or half duplex
- Can be configured via RS232 serial port
- Ethernet port for telnet or web browser management

Protocol Features:

- 256 bit AES encryption
- 128 bit blocks
- Block Cipher: Cipher feedback mods
- Transmit on idle time, fixed time period, block size, or character
- Use for polling data, half duplex operation

Indicators

Front: Power, Status, Port Activity (2)

Rear: Cipher status, LAN status

Controls

Switch to invoke serial port setup

Temporary setup bypass mode (Block Clear Mode)

User name and password option for configuration authority

Physical/Electrical

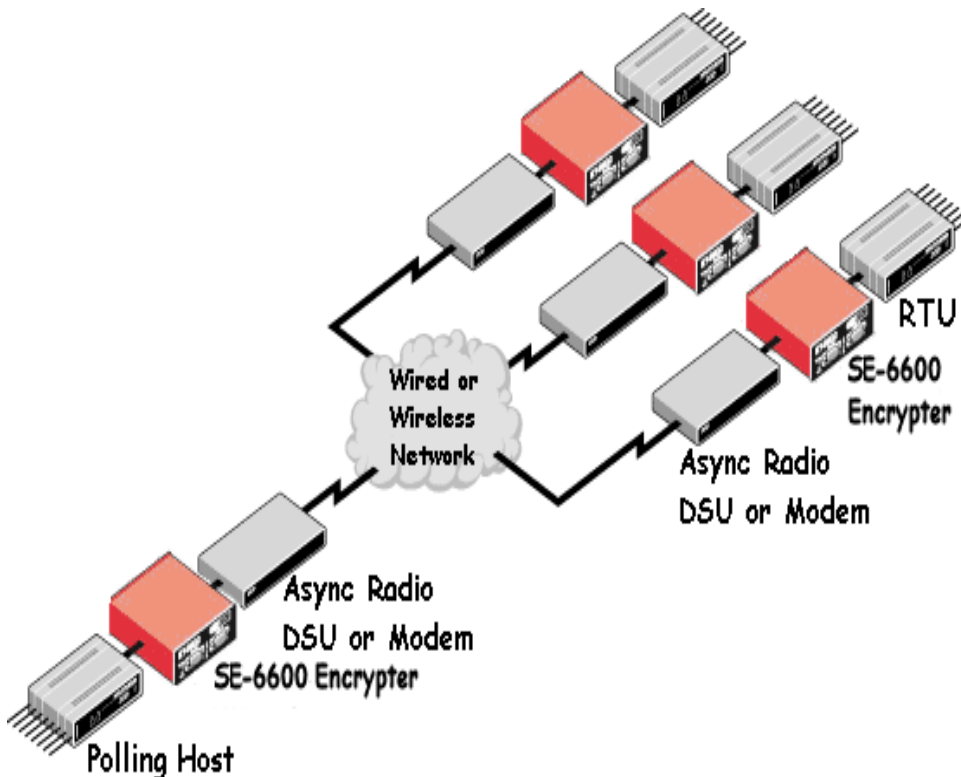
- Power Requirements: 9 to 30 VDC, 2 watts
- 48, 125 VDC and 240 VAC options are available
- Supplied with 120 VAC external power supply
- Dimensions: 4 1/4" x 3" x 1"
- 7.5 oz.
- Din clip mounting available
- ROHS, CE

Environmental

Operational Temperature: - 40 to +75 C, non-condensing humidity



APPLICATION



Data Comm for Business, Inc.

2949 CR 1000 E

Dewey, IL 61840

Voice 8004DCBNET

(800.432.2638)

Fax 217.897.1331

On line Information:

www.dcbnet.com/contact.html

Web www.dcbnet.com