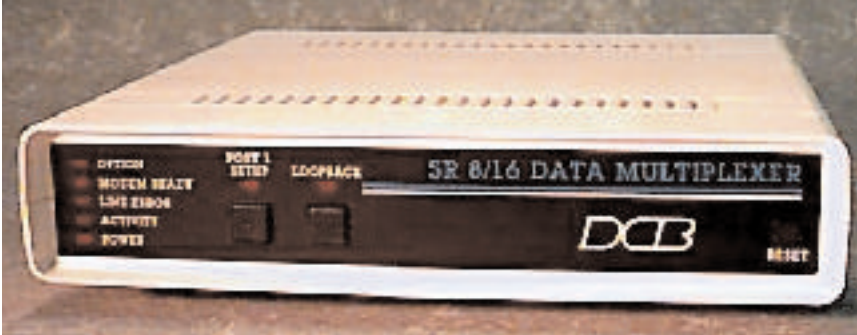




DATA CONCENTRATOR

Data Concentrator, 8 to 32 channel, simplex or duplex



FEATURES

- Simplex or full duplex links
- Suitable for satellite links
- Capable of single-direction broadcast operation with multi-drop links
- Protocol suitable for single-ended de-multiplexing in a PC
- Synchronous composite to 128 Kbps, async to 115.2 Kbps
- Individually configured asynchronous ports with speeds to 38.4 Kbps
- Network Management Port
- 8, 16, 24 or 32 channel models
- Test message generation
- RS-422 port option with in-line converter
- Field upgradable
- Optional internal 56 Kbps DSU/CSU

DESCRIPTION

The SRDC data concentrator multiplexes 8, 16, 24 or 32 asynchronous channels over a synchronous or asynchronous composite with the ability to operate over simplex or full duplex lines. The links can be modems, DSU's, ISDN, satellite links, radio links, etc. The composite protocol is simple enough to be decoded by a PC for custom applications. By decoding the protocol in a PC, the SRDC data concentrator can function as a single ended multiplexer. The decode software specification is available at no cost (with a non-disclosure statement).

All port parameters are set with an asynchronous terminal connected to the network management port. Set-up procedures are menu driven and fully explained on screen. All configuration parameters are battery supported through power outages.

The asynchronous ports can be individually set for speeds to 38.4 Kbps. Hardware (CTS) or software (Xon/Xoff even, odd, mark, space or transparent) flow control is also set on a port by port basis.

The SRDC data concentrator composite is synchronous or asynchronous simplex or full duplex lines either analog or digital. The composite can be run at speeds up to 128 Kbps sync, 115.2 Kbps async.

The network management port includes all necessary configuration commands. The Show Configuration Commands allow the system manager to view the configuration settings of the SRDC data concentrator. The network management system is full featured and easy to use. Each SRDC comes with a network management cable and connectors. The commands are simple, in English, and comprehensive. The SRDC can usually be set up without referring to the manual. Each SRDC can have an ID set, and has a built-in "data line monitor" which allows the monitoring of the transmit or receive lines at the local data concentrator.

The SRDC data concentrator has a side panel access for firmware cartridge installation. This feature simplifies installation of upgrades for new features and functions.

The SRDC data concentrators are compatible with virtually all async terminal-printer/computer links. You can save thousands of dollars by concentrating your terminals on one line while delivering top performance.

DCB Data Concentrator

SPECIFICATIONS

General

Asynchronous Statistical Multiplexing
8, 16, 24 or 32 channels
Ports can be set up to 38,400 bps

Port Specifications

Data Format

1 Start bit
8 Data bits including parity if used
1 Stop bit
10 Bits total Rates: 300, 1200, 1800, 2400,
4800, 9600, 19200, 38400 bps individually
selectable per port

Interface: CCITT V.24, RS-232-D, Optional
RS-422/RS-232 external adapter

Connectors: RJ-45 (8-wire)

Buffering: 64K dynamically allocated

Port Flow Control: Set on an individual port
basis

Xon/Xoff

Clear to Send

Network Specifications

Rates: Follows modem clock signals to 128
Kbps synchronous, 115.2 asynchronous

Interface: CCITT V.24, RS-232-D, Optional
RS-422 simplex composite adapter

Connector: RJ-45 (8-wire)

Non-error corrected composite link

Network to modem/DSU cable included

Operating Modes

Normal on-line multiplexing
Transmit/Receive or receive only mode
Network loopback

Indicators (front panel)

Power, Multiplexing, Receive Error, Modem
Ready, Option, Loopback

Network Management Port

Interface: CCITT V.24, RS-232-D

Connector: RJ-45 (8-wire)

Network Management Port to terminal
cable included

Network Management Port Commands

Help Screen	<i>LOCAL & REMOTE:</i>
Monitor Transmit	Show Configuration
Monitor Receive	Show Network
Network Loopback	Configure Network
Flow Control Active	Configure Ports
Set Time	Port Loopback
	Device Type
	Reset
	Activity Counters

Physical/Electrical

Power requirements: 120 VAC, 30-43
Watts, .25-.36 Amps

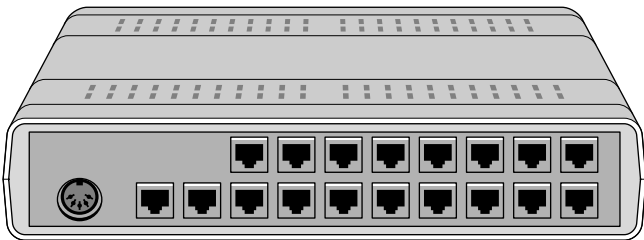
10¹/₄" x 9³/₄" x 2¹/₄" (8 or 16 channels)

10¹/₄" x 9³/₄" x 4¹/₄" (24 or 32 channels)

Options

9600 bps V.29 4-wire internal modem

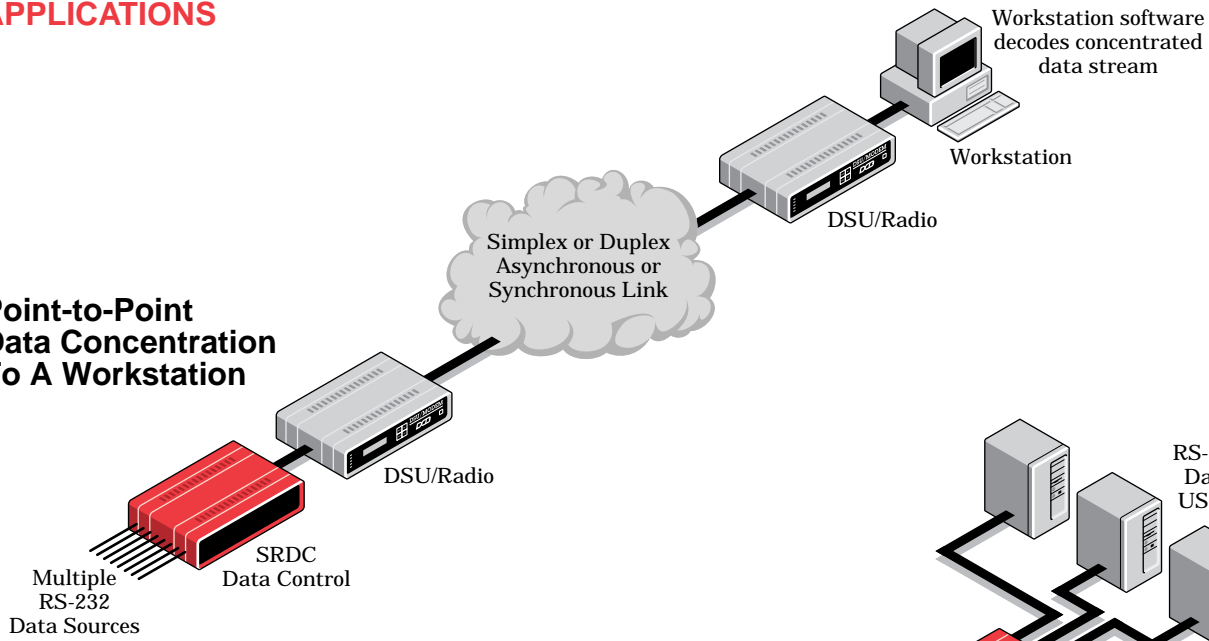
56 Kbps internal DSU/CSU



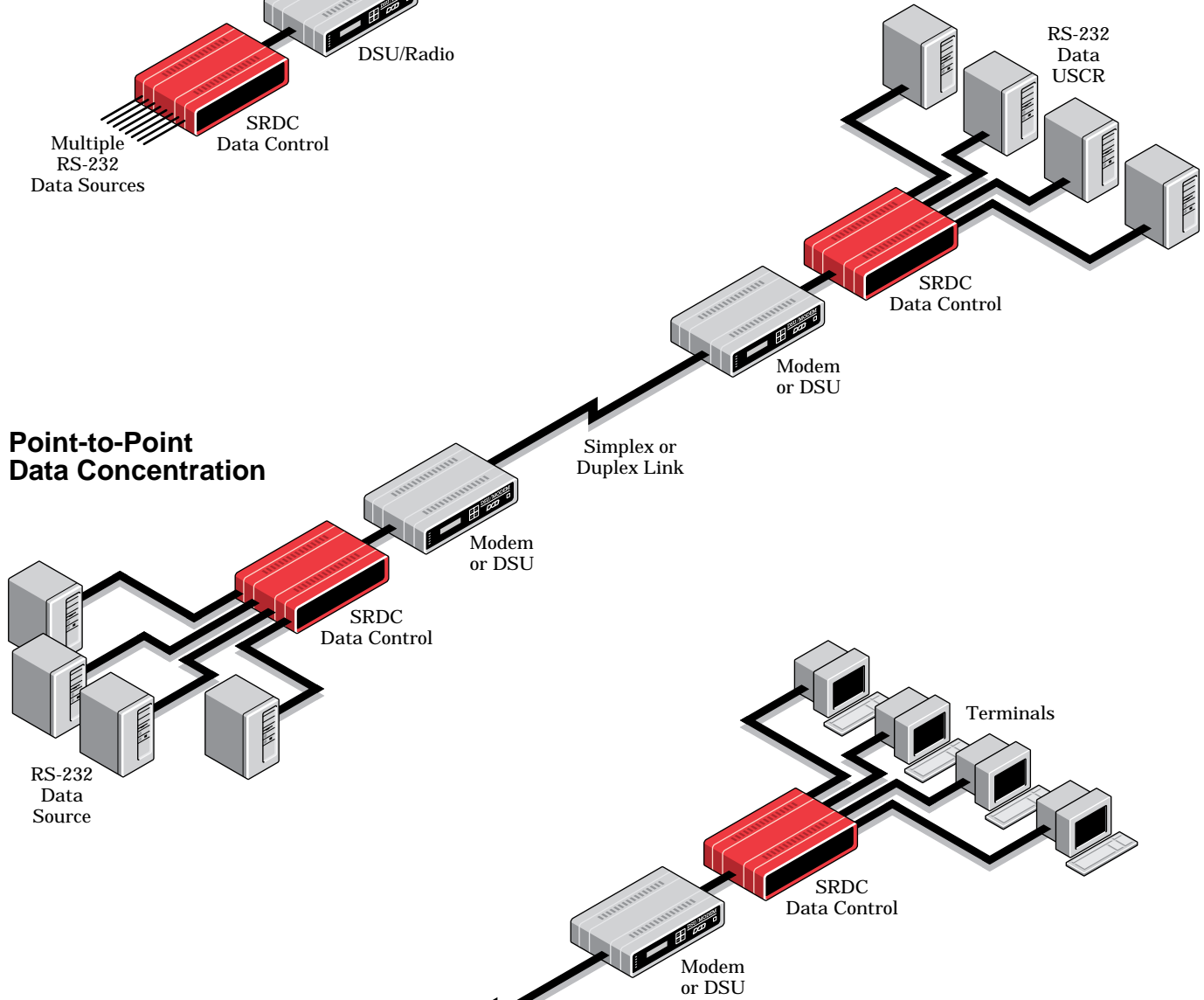
Rear view of 16 channel DCB SRDC Data Concentrator

APPLICATIONS

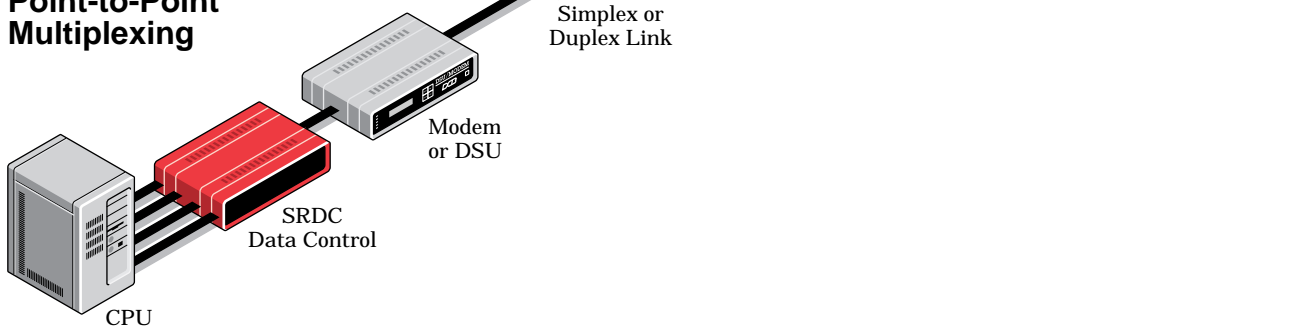
Point-to-Point Data Concentration To A Workstation



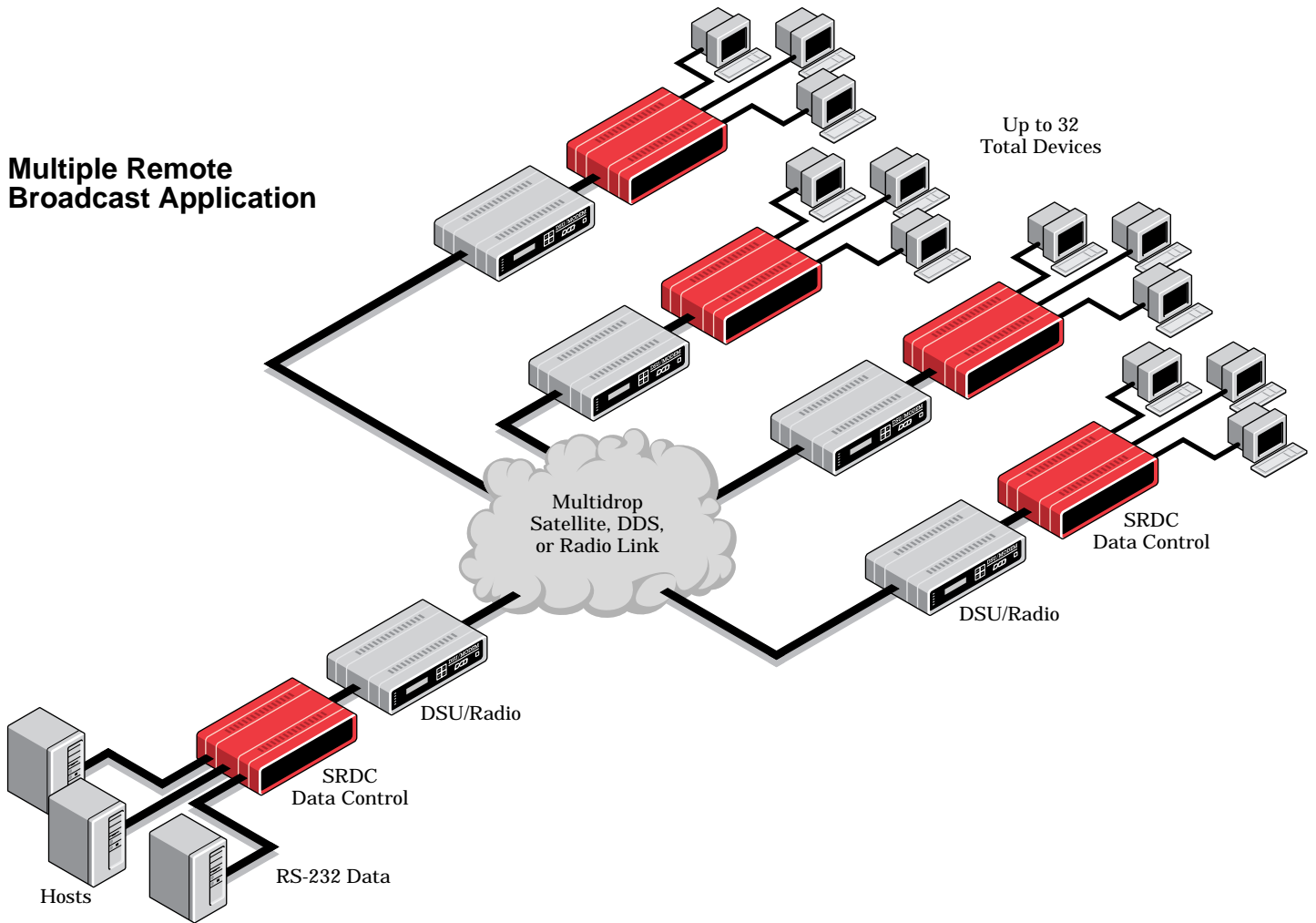
Point-to-Point Data Concentration



Point-to-Point Multiplexing



Multiple Remote Broadcast Application



Data Comm for Business, Inc.
807 Pioneer
Champaign, IL 61820
Voice 217.352.3207
800.4DCBNET
(800.432.2638)
Fax 217.352.0350
Email info@dcbnet.com
Web <http://www.dcbnet.com>