



DCB, Inc.
2949 CR 1000 E
Dewey, Illinois
61840

217.897.6600 Tel
800.432.2638 Toll Free
217.897.1331
www.dcbnet.com

TFTP Server

Quick-Start Guide

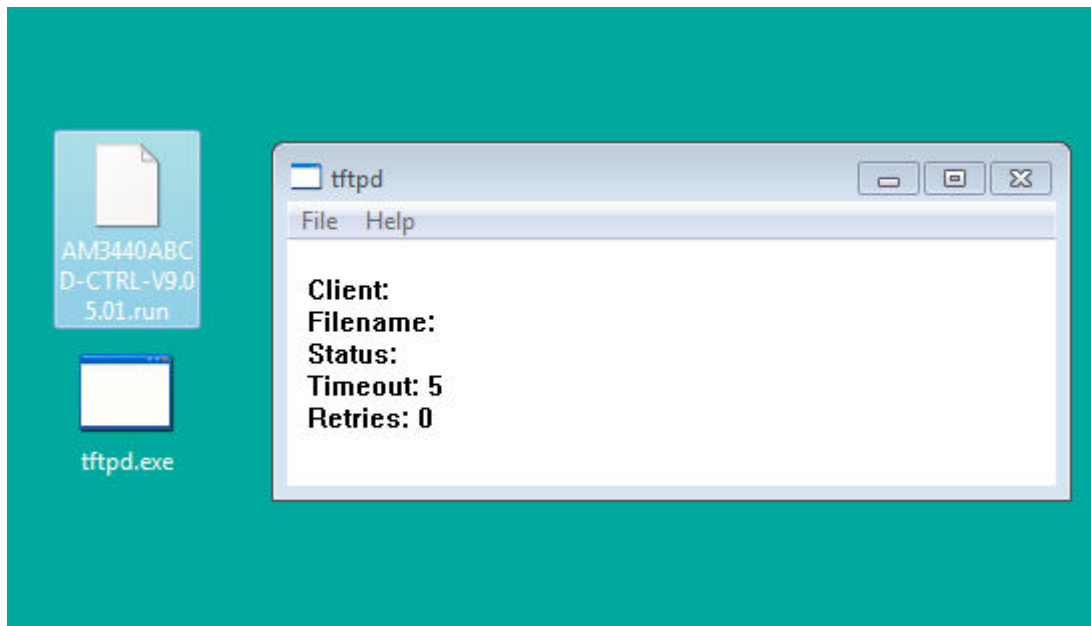
This tftp server is unsupported freeware. However, here are a few hints on using it.

A) Download the TFTP binary (tftpd.exe) and save it to your PC.

B) Start the TFTP binary.

NOTE: The directory from where the TFTP binary is start is also the directory that is served up via TFTP unless you request a file name with an absolute link such as "c:\somepath\somefile" . Normally, the files to be served out via TFTP must be in the same directory.

FOR EXAMPLE: If the TFTP binary is saved on the PC desktop, place the firmware file that needs to be served out via TFTP on the PC desktop as well.



C) When prompted for a TFTP server, use the IP address of the PC that is running the TFTP program.

NOTE: **Make sure the PC's firewall will permit access to the TFTP port.**



DCB, Inc.
2949 CR 1000 E
Dewey, Illinois
61840

217.897.6600 Tel
800.432.2638 Toll Free
217.897.1331
www.dcbnet.com

D) The download process will be displayed on the PC.

